

SAGE ACCPAC



Sage Accpac Integrated Suite

Get a 360° view of your business with Sage Accpac

sage

Whether your growth plans include buying and selling in the global marketplace, adding more talent to your team, or expanding your services, Sage Accpac ERP, part of the Sage Accpac Integrated Suite, has the tools and the flexibility to successfully accelerate your business expansion. Supporting different languages and multicurrency transactions, our network of partners in more than 150 countries allows you to confidently conduct business with suppliers and customers anywhere in the world.



World-Class Architecture

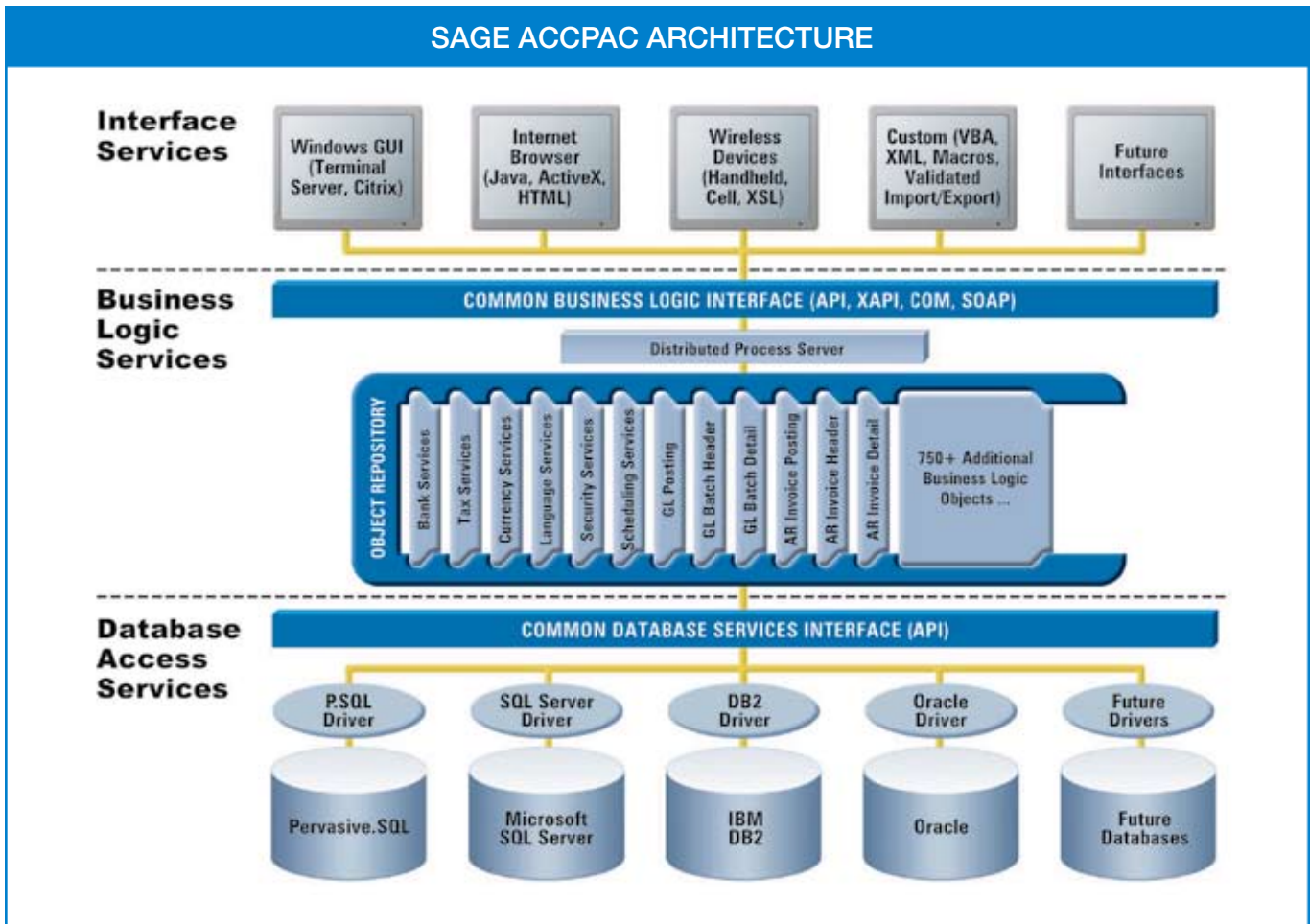
Sage Accpac ERP is an advanced application built on a multi-tiered, object-oriented architecture. Designed for the SME market, Sage Accpac can be deployed either as a Web-based application or as a desktop application.

Sage Accpac lets you choose the solutions and configurations that work best for you: The applications, the database, the deployment options and languages, the network environment or operating system, and the add-on software developed by Sage Software or one of our network of independent industry experts. We're here to help you operate more efficiently and allow you to focus on growing your business the right way.

Ultimate Scalability

From single-user remote locations to large corporate environments with multiple locations and demanding business management needs, no other product scales like Sage Accpac ERP. With Sage Accpac, you can upgrade smoothly from one version to the next as your business requirements expand, safe in the knowledge that your data will easily move with you.

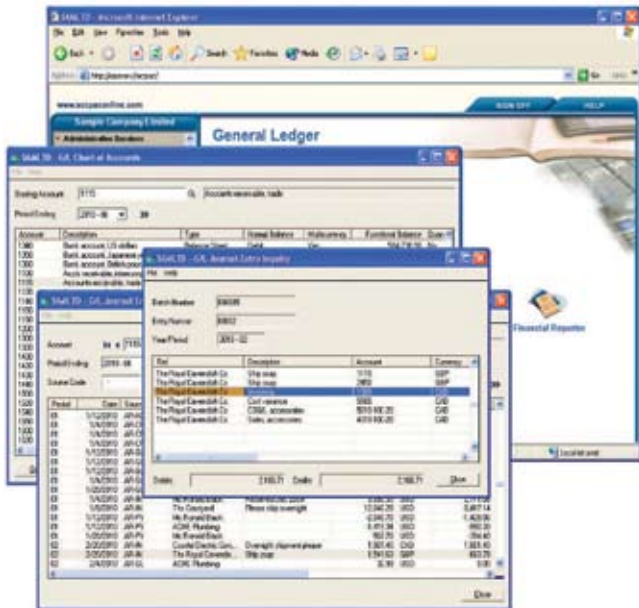
All Sage Accpac products have a uniform user interface, making it easy to upgrade without costly staff retraining or data conversion. Sage Accpac also enables data processing across multiple servers, so as your number of users increases, multiple servers can share the processing workload.



Sage Accpac is built upon industry-leading architecture that stands the test of time—quickly adapting to new technologies and easily integrating external applications for effective information exchange.

Easy to Use and Customize

Sage Accpac ERP is easy to set up and use, with intuitive wizards and a familiar interface that make configuration and navigation a breeze. Embedded Microsoft Visual Basic for Applications (VBA) lets you easily expand, customize, and integrate your Sage Accpac application.



Cross-module capabilities let you drill down to the original transaction.

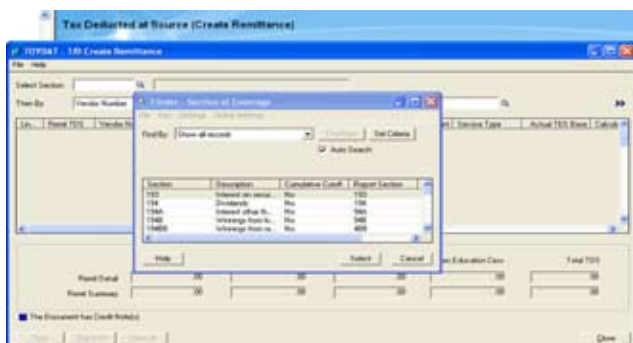
Total Investment Protection

Sage Accpac ERP is a complete system designed to give your business the competitive advantage. Our value-added protection plan, offered across all product lines, gives you the investment protection you need to move quickly and easily from one version to the next, so you can increase the functionality of your system as your business requirements expand.

India TDS Module

Sage Accpac ERP is a global solution designed to suit the local Indian business needs. The solution addresses and complies with Indian statutory requirements and comes with the TDS module. Key features include:

- Statutory Form Reporting (16A, 26Q, 27Q)
- E-Filing
- TDS Posting
- Remittance creation & entry
- Prepayment entry



Designed for Global Business

In today's global marketplace, your suppliers, your customers, and your competition are no longer limited by physical borders. That's why you'll be glad to know that Sage Accpac is deployed in more than 150 countries worldwide and supports multiple languages, so it can satisfy even the most demanding international requirements. A truly global application, Sage Accpac handles transactions using multiple currencies, calculates currency-valuation, and complies with local accounting.

Industry-Specific Solutions for Your Business

Your Sage Accpac ERP system is supported by a network of local experts who can enhance and extend it further to meet your market's specific requirements, thanks to the wide range of high-quality integrated vertical tools and our strong network of more than 400 development partners. Whatever your industry, our skilled partner network makes it possible to meet any business challenge, no matter how unique.

“Sage Accpac takes a sovereign position in mid-market solutions for the breadth of its integration. Architected for the Web, the object-oriented technological infrastructure has served the company well in supporting a total back-office to front-office integration of the complete product line.”

Dr. Katherine Jones
Aberdeen Group

Freedom of Choice

With streamlined integration across applications, advanced Web and wireless access, full multilingual and multicurrency capabilities, a scalable open architecture, and a choice of databases and operating systems, you can select the edition that best meets your business needs now, and you can be sure it will comfortably grow with your business in the future.

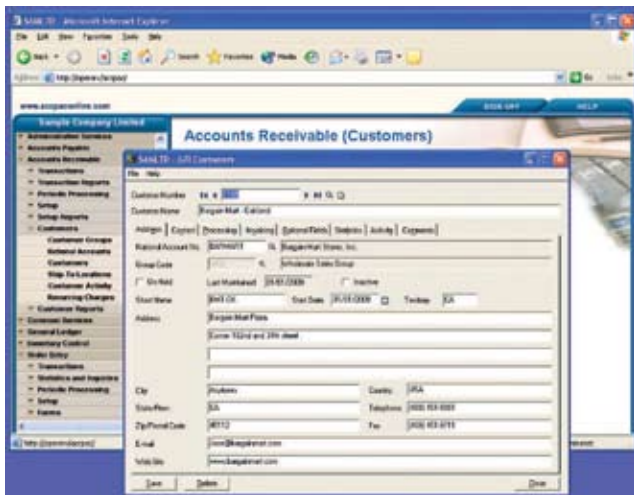
Sage Accpac Integrated Suite

The Sage Accpac Integrated Suite offers the freedom of choice, ease of integration, high performance, and reliability that forward-thinking companies rely on to increase profitability and seize the competitive advantage. At the core of the Sage Accpac Integrated Suite are strong financial and operational capabilities .

Core Financial

The financial modules of Sage Accpac ERP – accounts receivable, accounts payable, the general ledger, and the system manager – are powerful tools to help you confidently manage your business' complex finances. Available with full multicurrency capability, powerful bank reconciliation and tax reporting features, flexible transaction processing options, and informative dashboards for analytical reporting, Sage Accpac Core Financials help businesses succeed by accurately presenting valuable financial information in a clear, understandable format.

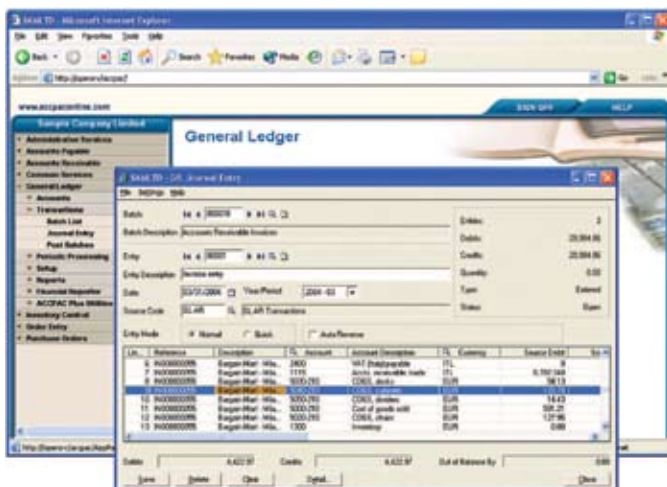
To grow, you need to compete. To compete, you need to be intelligent. Sage Accpac provides you with tools that allow you to spend less time on the small details and more time on the big picture that will net you valuable business intelligence to make your organization more competitive.



Take advantage of powerful AR features to make the most of your customer and contact information.

Core Operational

The core operational modules of Sage Accpac ERP (inventory control, order entry, purchase orders, and project and job costing) streamline the order fulfillment process so your business delivers every time. The order entry and purchase orders modules are fully integrated with project and job costing, offering the most flexibility in the way transactions can be processed, while the inventory control module allows you to manage thousands of items and create flexible price lists. You even have the option of determining how and when inventory costing is performed, offering you ultimate freedom in managing your business your way.



Sage Accpac delivers sophisticated multicurrency and global accounting features.

Database and Operating Systems Support

Sage Accpac ERP can be deployed on either Microsoft® Windows or Linux operating systems and can run on a variety of back-end database structures, including:

- Microsoft SQL® Server
- Pervasive.SQL
- IBM DB2
- Oracle



Accounts Payable, receivable and Sales Analysis dashboards

Editions

Sage Accpac ERP 100

Our entry level offering for a growing business that requires strong and secure financial and operations management. Sage Accpac ERP 100 handles up to three GL account segments, stores up to seven years of history and can accommodate up to ten concurrent users. And, Sage Accpac 100 easily manages data for up to five different companies.

Sage Accpac ERP 200

This edition builds on the solid financial and operations management capabilities of Sage Accpac ERP 100, but we've added advance credit claim and user-defined account group capabilities, and support for up to four GL segments. Sage Accpac ERP 200 can accommodate up to twenty concurrent users and there is no restriction on the number of companies that can be managed.

Sage Accpac ERP 500

This edition provides the mid-market customer with big business aspirations all the tools for success. Sage Accpac ERP 500 offers advanced inventory, purchasing, and order management with up to 10 GL account segments, unlimited account structures, 99 years of financial history, and the ability to manage an unlimited number of concurrent users and companies.

Sage Accpac Edition Differences

Feature	500 Version 5.5	200 Version 5.5	100 Version 5.5
Number of Companies	Unlimited	Unlimited	5
Number of Users	Unlimited users	Limited to 20 users	Limited to 10 users
Pervasive.SQL Version	Yes	Yes	Yes
Microsoft SQL Server Version	Yes	Yes	Yes
IBM DB2 Version	Yes	Yes	Yes
Oracle Version	Yes	Yes	Yes
Multicurrency	Yes	Yes	Yes
Transaction Analysis and Optional Field Creator	Yes	Yes	Yes
ACCPAC Alerts	Yes	Yes	Yes
System Manager			
SageCRM for Sage Accpac Server	Supported	Supported	Supported
SageCRM for Sage Accpac Single User License	Supported	Supported	Supported
Additional Language Overlays	Supported	Supported	Supported
Financial Management			
NEW! Integrated Dashboards	Yes	Yes	Yes
Accounts Receivable:			
Advance Credit Claims (Receipt Entry)	Yes	Yes	No
Customer Number Change	Yes	Yes	Yes
AR Inquiry	Yes	Yes	Yes
National Accounts Management	Yes	Yes	Yes
Accounts Payable:			
Advance Credit Claims (Payment Entry)	Yes	Yes	No
Vendor Number Change	Yes	Yes	Yes
General Ledger:			
NEW! G/L Account Rollup	Yes	No	No
IMPROVED Number of Account Segments	10	4	3
IMPROVED Number of Account Structures	Unlimited	4	3
IMPROVED Number of Budgets	5	3	2
IMPROVED Years of History	99	7	7
User-defined Accounts Groups	Yes	Yes	No
G/L Security	Yes	Yes	Yes
Account Code Change	Yes	Yes	Yes
G/L Consolidations	Yes	Yes	Yes
Intercompany Transactions	Yes	Yes	Yes
Operations Management			
Inventory Control :			
Number of Item Segments	10	10	4
Multiple Levels of Bills of Material	Yes	Yes	Yes
Customer Item Numbers	Yes	No	No
Advanced Pricing			
Price by Unit of Measure	Yes	No	No
Price by Weight or Quantity	Yes	No	No
Price by a Cost Plus a Percentage or Amount	Yes	No	No
Below Cost or Sales Margin			
Price Checks	Yes	No	No
Item Number Change	Yes	Yes	Yes
Order Entry:			
Ops Inquiry	Yes	Yes	Yes
Return Merchandise Authorization	Yes	Yes	Yes
Purchase Orders:			
Vendor Contract Costs	Yes	Yes	No
Serialized Inventory	Yes	Yes	Yes
Lot Tracking	Yes	Yes	Yes
Uni-Sales Analysis	Yes	Yes	Yes
Project and Job Costing			
Time Cards	Yes	Yes	Yes

Sage Software India Pvt. Ltd.

100, Okhla Industrial Estate,
Phase - III, 1st Floor,
New Delhi - 110020.

Tel: +91 11 41002488/81/82

Fax: +91 11 41002486

Email: salesindia@sage.com

www.sagesoftware.co.in

The Sage logo is displayed in white lowercase letters on a light beige background. The letters are stylized, with the 's' and 'g' having a slight curve. The logo is centered within a white rectangular border.