

Sage Accpac Integrated Suite



Get a 360° view of your business with Sage Accpac

Whether your growth plans include buying and selling in the global marketplace, adding more talent to your team, or expanding your services, Sage Accpac ERP, part of the Sage Accpac Integrated Suite, has the tools and the flexibility to successfully accelerate your business expansion. Supporting different languages and multicurrency transactions, our network of partners in more than 150 countries allows you to confidently conduct business with suppliers and customers anywhere in the world.



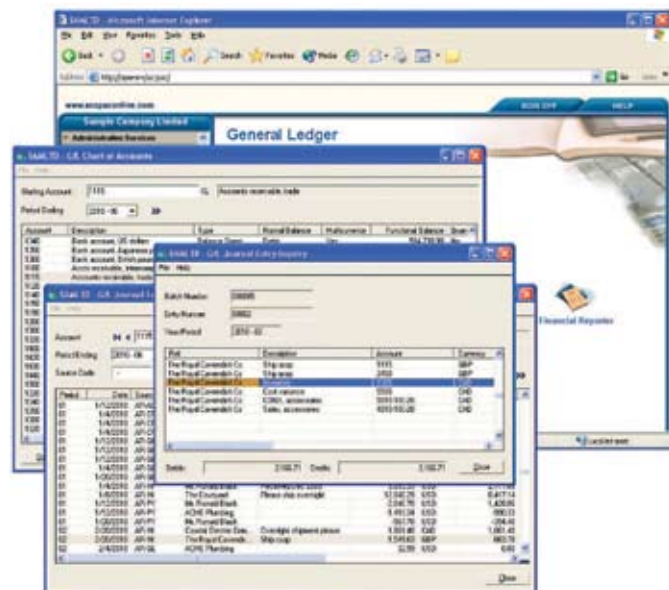
World-Class Architecture

Sage Accpac ERP is an advanced application built on a multi-tiered, object-oriented architecture. Designed for the SME market, Sage Accpac can be deployed either as a Web-based application or as a desktop application.

Sage Accpac lets you choose the solutions and configurations that work best for you: The applications, the database, the deployment options and languages, the network environment or operating system, and the add-on software developed by Sage Software or one of our network of independent industry experts. We're here to help you operate more efficiently and allow you to focus on growing your business the right way.

Easy to Use and Customize

Sage Accpac ERP is easy to set up and use, with intuitive wizards and a familiar interface that make configuration and navigation a breeze. Embedded Microsoft Visual Basic for Applications (VBA) lets you easily expand, customize, and integrate your Sage Accpac application.



Cross-module capabilities let you drill down to the original transaction.

Ultimate Scalability

From single-user remote locations to large corporate environments with multiple locations and demanding business management needs, no other product scales like Sage Accpac ERP. With Sage Accpac, you can upgrade smoothly from one version to the next as your business requirements expand, safe in the knowledge that your data will easily move with you.

All Sage Accpac products have a uniform user interface, making it easy to upgrade without costly staff retraining or data conversion. Sage Accpac also enables data processing across multiple servers, so as your number of users increases, multiple servers can share the processing workload.

Designed for Global Business

In today's global marketplace, your supplies, your customers, and your competition are no longer limited by physical borders. That's why you'll be glad to know that Sage Accpac is deployed in more than 150 countries worldwide and supports multiple languages, so it can satisfy even the most demanding international requirements. A truly global application, Sage Accpac handles transactions using multiple currencies, calculates currency-revaluation, and complies with local accounting.

Freedom of Choice

With streamlined integration across applications, advanced Web and wireless access, full multilingual and multicurrency capabilities, a scalable open architecture, and a choice of databases and operating systems, you can select the edition that best meets your business needs now, and you can be sure it will comfortably grow with your business in the future.

Sage Accpac Integrated Suite

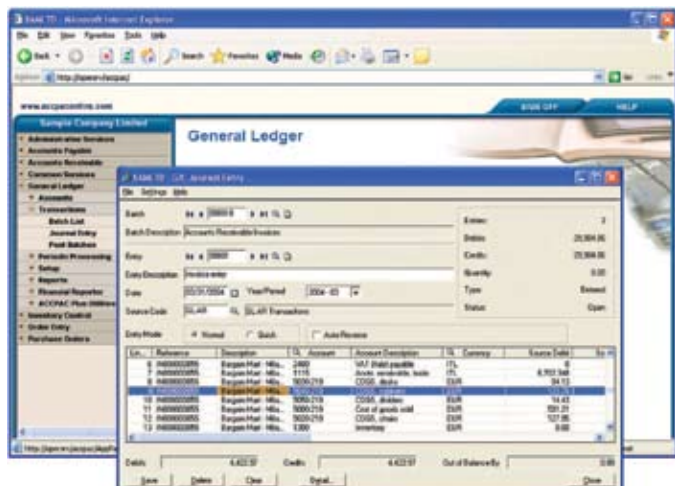
The Sage Accpac Integrated Suite offers the freedom of choice, ease of integration, high performance, and reliability that forward-thinking companies rely on to increase profitability and seize the competitive advantage. At the core of the Sage Accpac Integrated Suite are strong financial and operational capabilities.

Core Financial

The financial modules of Sage Accpac ERP - accounts receivable, accounts payable, the general ledger, and the system manager - are powerful tools to help you confidently manage your business' complex finances. Available with full multicurrency capability, powerful bank reconciliation and tax reporting features, flexible transaction processing options, and informative dashboards for analytical reporting, Sage Accpac Core Financials help businesses succeed by accurately presenting valuable financial information in a clear, understandable format.

Core Operational

The core operational modules of Sage Accpac ERP (inventory control, order entry, purchase orders, and project and job costing) streamline the order fulfillment process so your business delivers every time. The order entry and purchase orders modules are fully integrated with project and job costing, offering the most flexibility in the way transactions can be processed, while the inventory control module allows you to manage thousands of items and create flexible price lists. You even have the option of determining how and when inventory costing is performed, offering you ultimate freedom in managing your business your way.



Sage Accpac delivers sophisticated multicurrency and global accounting features.

Database and Operating Systems Support

Sage Accpac ERP can be deployed on either Microsoft® Windows or Linux operating systems and can run on a variety of back-end database structures, including:

- Microsoft SQL® Server
- Pervasive.SQL
- IBM DB2
- Oracle

Sage Accpac Modules

- System Manager
- General Ledger
- Accounts Receivable
- Accounts Payable
- Inventory Control
- Order Entry
- Purchase Orders
- Project and Job Costing
- Multicurrency

Customer Relationship Management

Sage CRM is a powerful, easy to use customer relationship management solution that integrates directly with Sage Accpac ERP right out of the box.



Accounts Payable, receivable and Sales Analysis dashboards

Business Intelligence: Sage Accpac Insight

Sage Accpac Insight is an enterprise-wide reporting, budgeting, and consolidations application that is ideal for employees in remote offices and disparate departments who need to manage, distribute, and collaborate information from a single source. It allows users to quickly capture and process information into meaningful reports and to securely distribute them across the entire enterprise on demand.

Sage Accpac Project Job Costing

The Project Job Costing module provides an effective solution for project managers in construction, job service, and other professional industries who require a time-and-material system. It delivers the tools necessary to manage the simplest to most complex contract or job. It makes the estimating, tracking, costing, and billing of projects easy and manageable - simplifying cost control and planning. Sage Accpac Project Job Costing connects project activities with company financials, provides extensive inquiry and reporting capabilities and helps ensure accurate and timely accounting and billing processes throughout the life of a project.

With the powerful features you get in Project and Job Costing, you can identify potential issues and determine success factors for any project. The automated billing features in this job cost accounting software streamline customer invoicing and reduce the time spend managing this process.

If you are a project manager or an accountant in the construction/ engineering, services, manufacturing, telecommunications, transport or any business where you provide a service or a product over a given period of time and you need to track cost carefully to ensure profitability then Sage Accpac Project and Job Costing is the tool you should have.

About Sage

Sage Software India (P) Ltd is a subsidiary of The Sage Group plc, a leading international supplier of business management software solutions and related products and services for small to mid-sized businesses. Formed in 1981, Sage was floated on the London Stock Exchange in 1989 and the group now has 5.7 million customers and employs over 14800 people worldwide. Sage Software has over 700 customers in India for its CRM and ERP products across industries like, Trading and Distribution, Manufacturing, Services, IT/ITES, Financial Services, Media, Travel and Hospitality.

For more information or to find out how the Sage Accpac Integrated Suite of applications can help your business, visit us at www.sagesoftware.co.in or call +91 11 41002488 today.